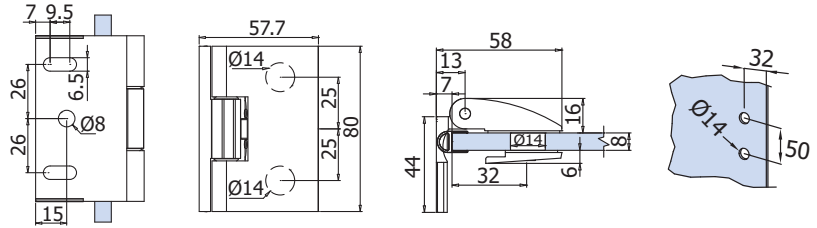



MORSETTI COORDINATI ▶ 160
COORDINATED CLAMPS
KOORDINIERTE KLEMMEN

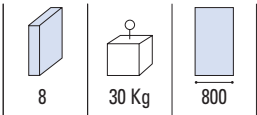
B-201

€ ▶ B.220

- Cerniera a scatto vetro/muro apertura a tirare. Materiale: Ottone.
- Glass to wall single action clicking hinge, pull to open. Material: Brass.
- Anschlagtürband Glas-Wand nach außen öffnend. (Selbstschliessende Bänder) Material: Messing. CR - NS



- Con guarnizione B-145
- With gasket B-145
- Mit Dichtung B-145

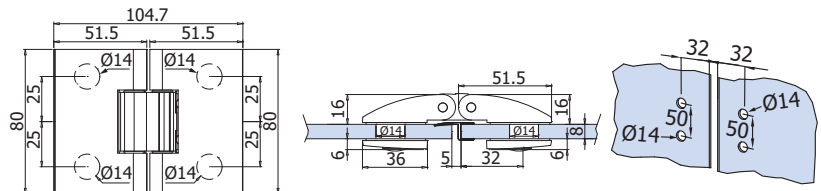


xmc015

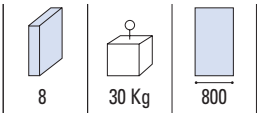

B-202

€ ▶ B.221

- Cerniera a scatto vetro/vetro apertura a tirare. Materiale: Ottone.
- Glass to glass single action clicking hinge pull to open. Material: Brass.
- Anschlagtürband Glas-Glas, nach außen hin öffnend. (Selbstschliessende Bänder) Material: Messing. CR - NS



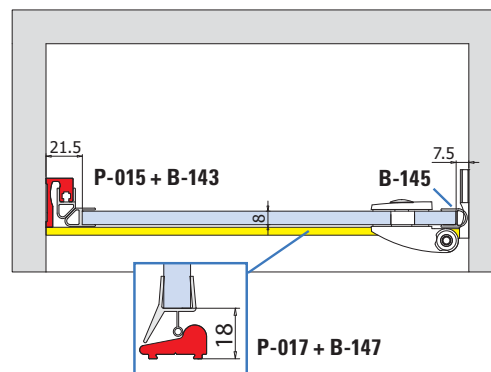
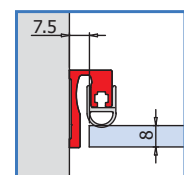
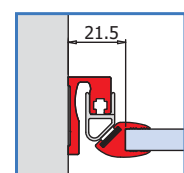
- Con guarnizione B-149
- With gasket B-149
- Mit Dichtung B-149



xmc015



- Applicazione con profilo battuta P-015 (optional).
- Installation with door stop profile P-015 (optional).
- Verwendung mit Türanschlagsprofil P-015 (optional).


P-015 + B-146

P-015 + P-016 + B-148

CR
 Cromo lucido
 Polished chrome
 Chrom glänzend

NS
 Nickel satinato
 Satin nickel
 Ähnlich Edelstahl matt

CERNIERE

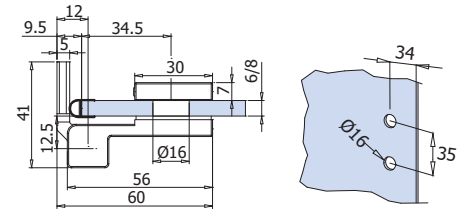
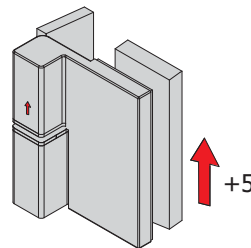
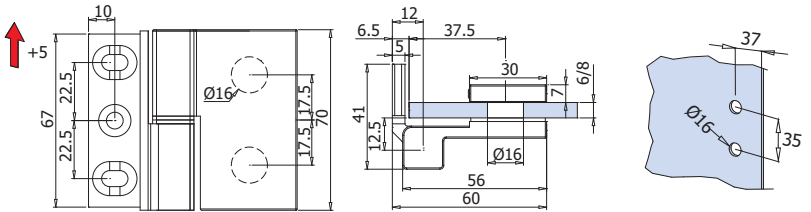

MORSETTI COORDINATI ▶ 160
COORDINATED CLAMPS
KOORDINIERT KLEMMEN

B-501 DX-SX

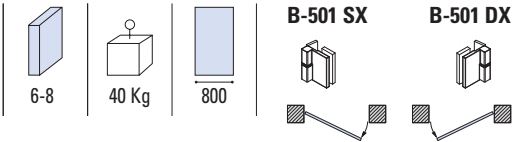
€ ▶ B.222

- Cerniera vetro/muro con alzata in apertura. Materiale: Zamak.
- Hinge wall to glass with lift-lower function at opening. Material: Zamak.
- Band Wand-Glas mit hebe-senk funktion. Material: Zamak.

CR - NS



- Con guarnizione B-145
- With gasket B-145
- Mit Dichtung B-145



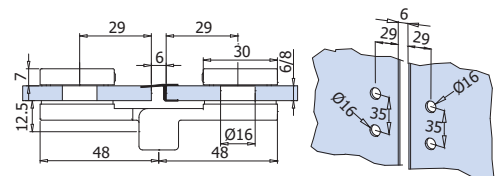
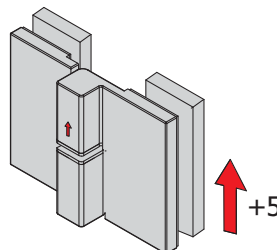
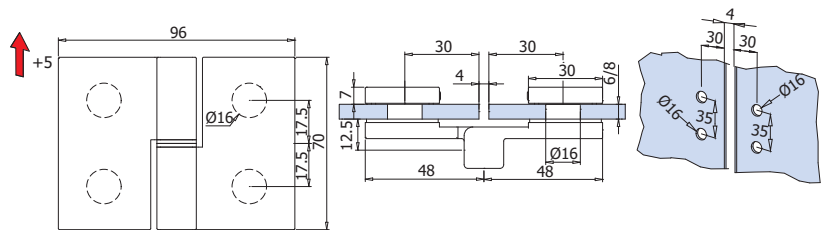
xmc016


B-502 DX-SX

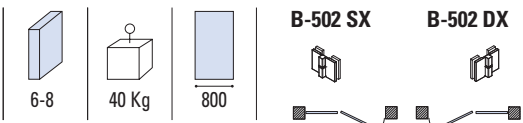
€ ▶ B.223

- Cerniera vetro/vetro con alzata in apertura. Materiale: Zamak.
- Hinge glass to glass with lift-lower function. Material: Zamak.
- Band Glas-Glas mit hebe-senk funktion. Material: Zamak.

CR - NS



- Con guarnizione B-149
- With gasket B-149
- Mit Dichtung B-149



xmc016

CR
 Cromo lucido
 Polished chrome
 Chrom glänzend

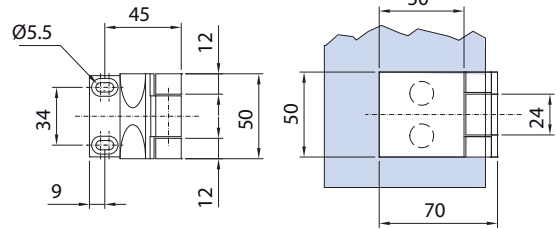
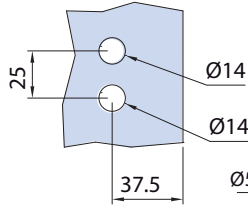
NS
 Nickel satinato
 Satin nickel
 Ähnlich Edelstahl matt

CERNIERE

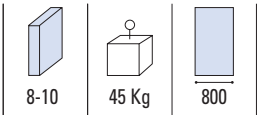

NEW
B-711

- Cerniera vetro muro. Materiale: zama.
- Glass to wall single action hinge. Material: zamak.
- Anschlagtürband Glas-Wand. Material: Zamak.

CR



€ ▶ B.224

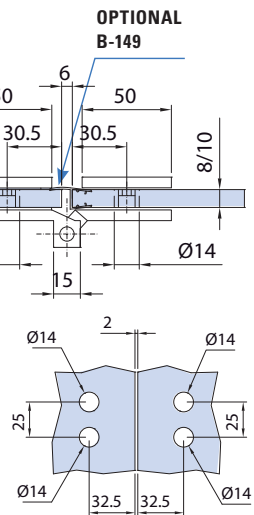
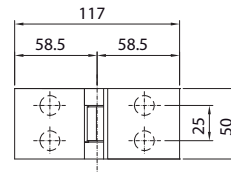
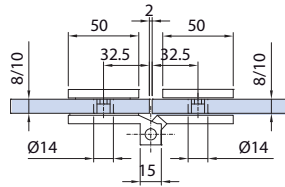
 OPTIONAL
B-145


xfb110

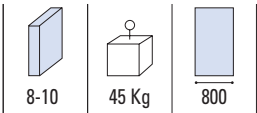

NEW
B-712

- Cerniera vetro/vetro. Materiale: zama.
- Glass to glass hinge. Material: zamak.
- Duschtürband Glas-Glas. Material: Zamak.

CR



€ ▶ B.225

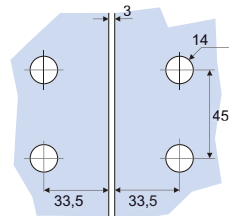
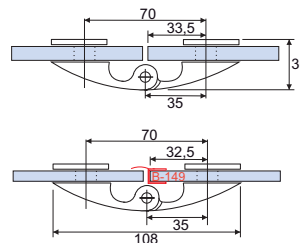
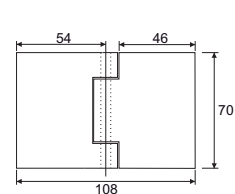
 OPTIONAL
B-149


xfb111

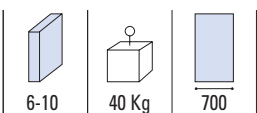

B-104

- Cerniera vetro/vetro. Materiale: ottone.
- Glass to glass hing. Material: brass.
- Duschtürband Glas-Glas. Material: Messing.

CR - NS



€ ▶ B.227



xme336

CR
 Cromo lucido
 Polished chrome
 Chrom glänzend

NS
 Nickel satinato
 Satin nickel
 Ähnlich Edelstahl matt

CERNIERE

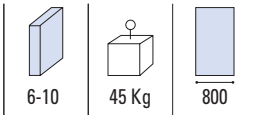
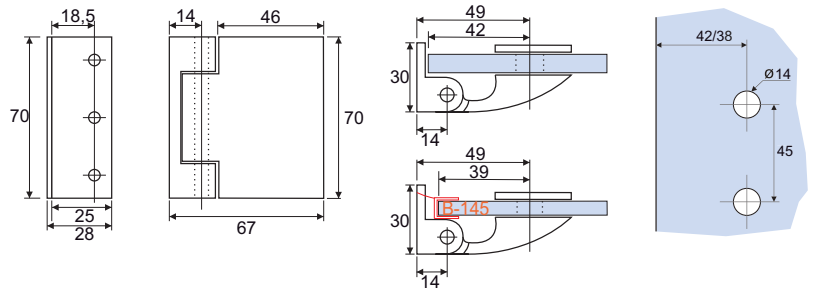


B-105

- Cerniera vetro/muro apertura a tirare. Materiale: ottone.
- Glass to wall hinge, pull to open. Material: brass.
- Duschtürband Glas-Wand nach außen öffnend. Material: Messing.

CR - NS

€▶B.226



xme336

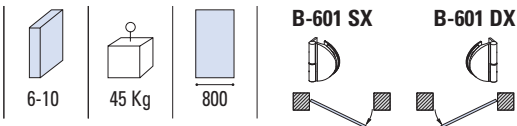
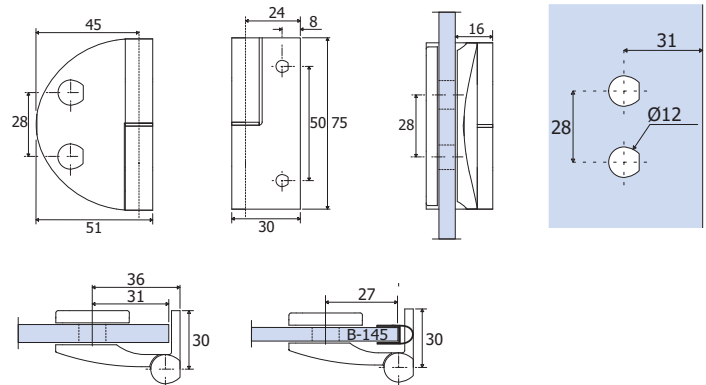


B-601 DX - SX

- Cerniera vetro/muro apertura a tirare. Materiale: ottone.
- Glass to wall hinge, pull to open. Material: brass.
- Duschtürband Glas-Wand 90° nach außen öffnend. Material: Messing.

CR - NS

€▶B.228



xme402

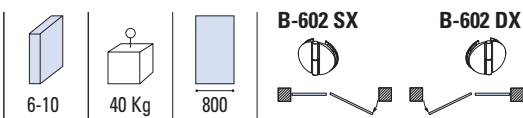
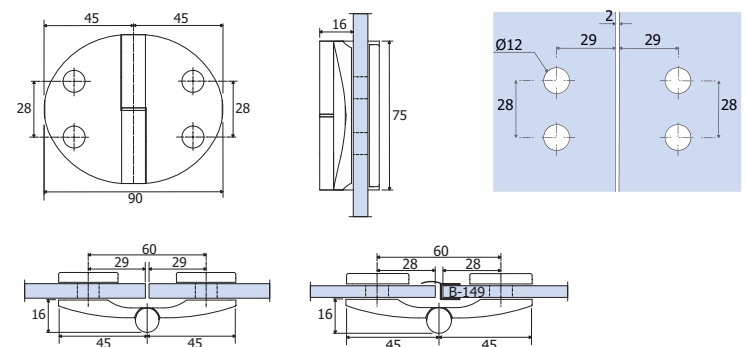


B-602 DX - SX

- Cerniera vetro/vetro apertura a tirare. Materiale: ottone.
- Glass to glass hinge pull to open. Material: brass.
- Duschtürband Glas-Wand nach außen öffnend. Material: Messing.

CR - NS

€▶B.229



xme402

CR
Cromo lucido
Polished chrome
Chrom glänzend

NS
Nickel satinato
Satin nickel
Ähnlich Edelstahl matt

CERNIERE