

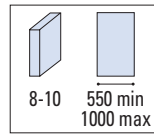
# EVOLUTION MINI SOFT-CLOSE



**V-5430**

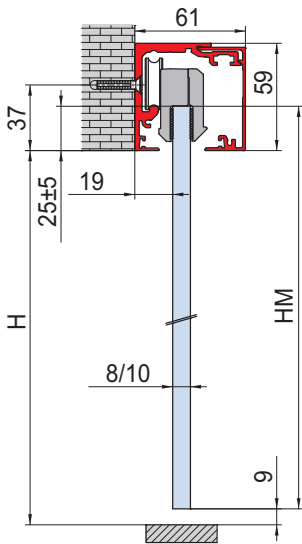
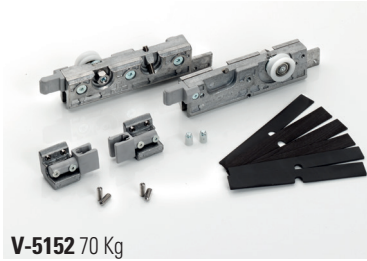
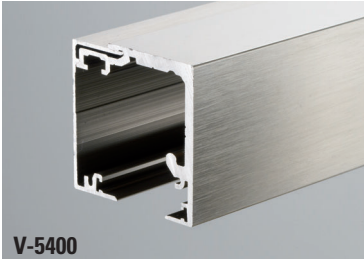


**V-5450**

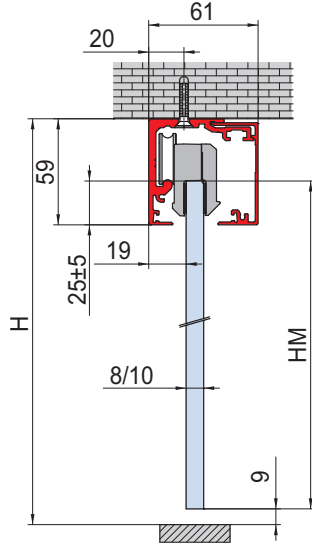


SIMPLE



**COMPONENTI / COMPONENTS / EINZELTEILE ▶ 28**


$$HM = H + 16$$



$$HM = H - 44$$

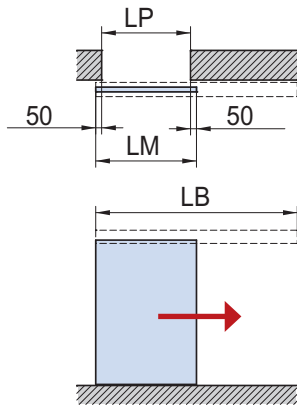


SIMPLE

**V-5430 / V-5450 SET 1**

- Set per 1 anta scorrevole, fissaggio a parete/soffitto
- Sliding door set, wall/ceiling installation
- Schiebetürset 1-flügelig, Wand-Deckenmontage

€▶ A.32 €▶ A.36



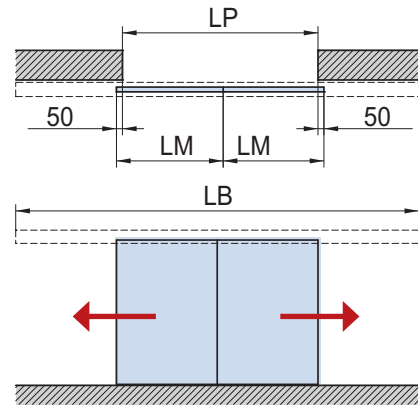
$$LB = LP \times 2 + 150$$

$$LM = LP + 100$$

**V-5430 / V-5450 SET 2**

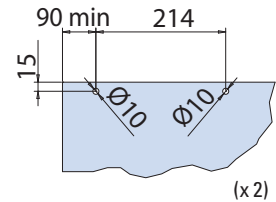
- Set per 2 ante scorrevoli, fissaggio a parete/soffitto
- Sliding doors set, wall/ceiling installation
- Schiebetürset 2-flügelig, Wand-Deckenmontage

€▶ A.33 €▶ A.37

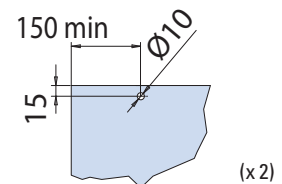


$$LB = LP \times 2 + 100$$

$$LM = (LP + 100) / 2$$

**LAVORAZIONE VETRO  
GLASS PREPARATION  
GLASBEARBEITUNG**


- Fori optional per V-5102
- Holes optional for V-5102
- Bohrungen Optional für V-5102



- Fori optional per V-5152
- Holes optional for V-5152
- Bohrungen Optional für V-5152

xla340c

Cod.	Fin. / Fin. / Oberf.	V-5430 / V-5450 SET 1 FIX	V-5430 / V-5450 SET 1-MIS	V-5430 / V-5450 SET 2 FIX	V-5430 / V-5450 SET 2-MIS
<b>V-5400</b> L=2000 L=3000 L=4000 L=6000	AN / IXE / NO	1	-	1	-
<b>V-5400-MIS</b> L=1500 → 6000	AN / IXE / NO	-	1	-	1
<b>V-5152</b>	-	1	1	2	2
<b>V-5406-70 C</b> (V-5430)-70 Kg <b>V-5406-80</b> (V-5450)-80 Kg	-	1	1	2	2
<b>V-5401</b>	AN / IXE / NO	1	1	1	1
<b>V-012</b>	AN / NS / NO	1	1	2	2